

An aerial photograph of a large, modern hospital building with a complex, multi-winged structure. The building is surrounded by lush greenery and trees. A vertical yellow bar is positioned in the center of the image, partially overlapping the building. The text 'HOSPITAL AND CLINICAL CENTER' is written in white, bold, sans-serif capital letters on the left side of the building. The logo, consisting of a yellow and white geometric shape, is positioned on the right side of the building. Below the logo, the text 'SERRA LIFE' is written in white, bold, sans-serif capital letters, and 'CANELA • RS' is written in a smaller, yellow, sans-serif font below it.

HOSPITAL
AND
CLINICAL
CENTER

SERRA LIFE

CANELA • RS



nucleo.com.br



SERRA LIFE

CANELA • RS



Seferin
Arquitetos
da saúde



construção de contextos
de prosperidade
na saúde

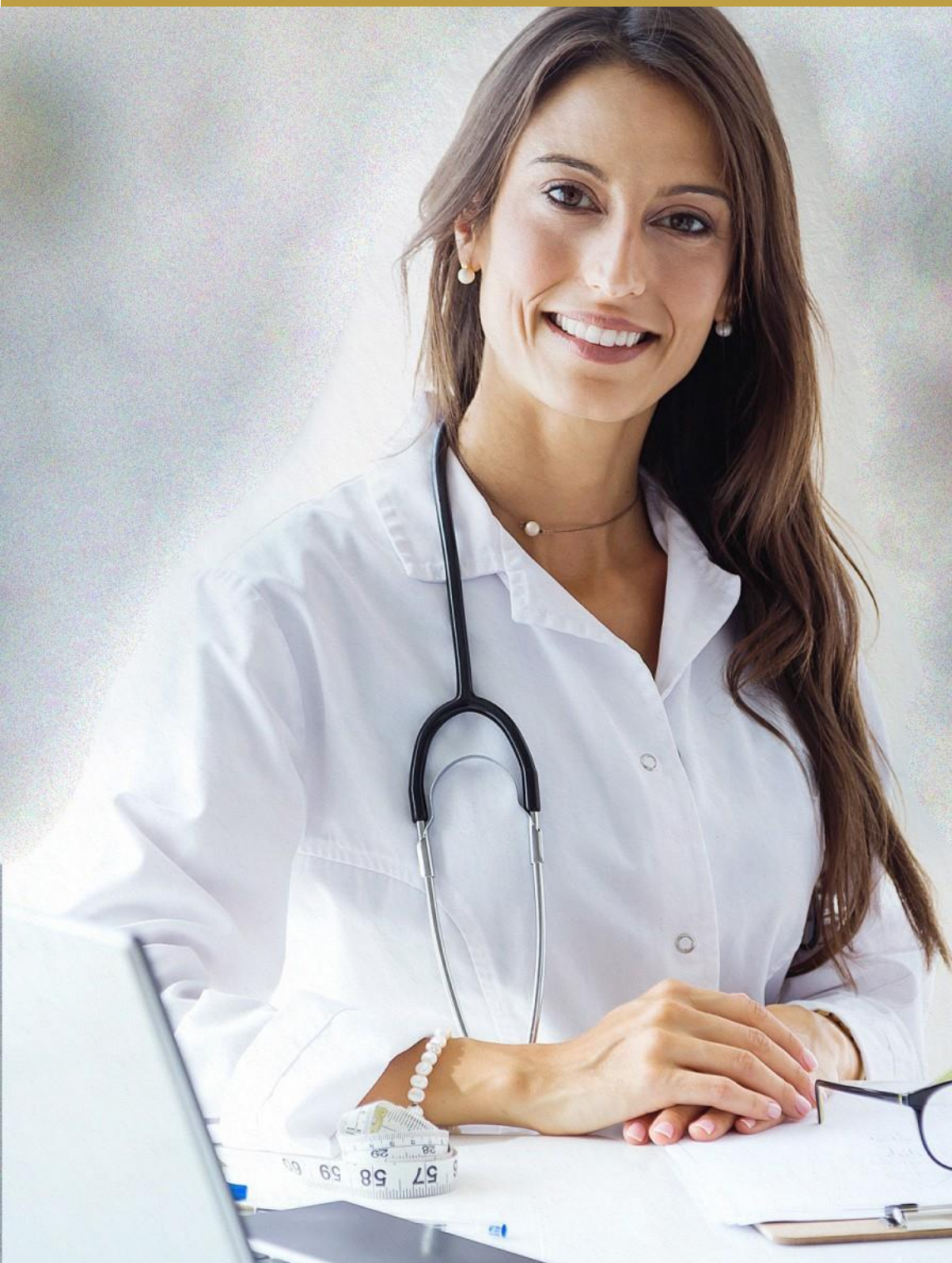


SERRA LIFE

CANELA • RS

A complete health center in Serra Gaúcha

Wide and innovative structure to
provide the best service at all times.





Great works in different cities

Throughout its more than 30 years of activity, Incorporadora Novalternativa has idealized great works in different cities of Rio Grande do Sul, always prioritizing innovation and planning spaces that provide quality of life, comfort and well-being. Among its outstanding developments is the Campos de Canela Station, a tourist complex that revitalized the central region of Canela.



construção de contextos
de prosperidade
na saúde

Seferin
Arquitetos
da saúde

Expertise in architectural design

Companies specializing in healthcare throughout the country sign the architecture and installation projects, striving for contemporary and differentiated architecture in terms of flow and processes.

L+ M has three decades of experience and more than 1.1 million m² in projects, 430 thousand m² built and 370 clients throughout Brazil. Seferin Arquitetura is the office responsible for all LifeDay Network projects. It has more than 70,000 m² of projects in the health area and a high degree of technical knowledge to make and execute works in this segment that comply with Health Surveillance standards.

CONFIGURATIONS OF HOSPITAL SERVICES

EXPECTED START OF WORKS: JAN/23

EXPECTED COMPLETION: 36 MONTHS after beginning

TOTAL BUILT AREA: 15,573.06m²

SURGERY CENTER:

- 06 operating rooms
- Last generation equipments
- Service greater than 85% of regional demands
- Medium and high complexity procedures
- Hospital stay of up to 04 days

HOSPITALIZATION:

- Post-operative unit with 20 beds (12-hour length of stay)
- Clinical unit with 20 beds (stay time of 48 hours)
- Clinical Unit with 20 beds (stay time of 04 days)
- Post-discharge home medical care unit.

CHEMOTHERAPY:

- 10 boxes for cancer patients and other specialized infusion needs.

*The medical service will be linked to an Oncology Clinic with specialist doctors who will use the service exclusively for the treatment of patients.

ICU BEDS:

- Exclusive use for intercurrentence of patients in attendance at the hospital, therefore not open to the market.
- 02 intensive care beds in the Emergency Room, for the stabilization of patients who happen to need it, for later referral, safely to the referral hospital.
- 04 beds for internal use, two beds in the postoperative unit and two more beds in the Clinical hospitalization unit.

HEMODIALYSIS AND PERITONEAL DIALYSIS:

Integrated with the nephrology service, to care for hospitalized patients and primarily outpatients in the region.



NOVA ALTERNATIVA
Incorporadora

SERRA LIFE
CANELA • RS



←
GRAMADO

→
CANELA

HOSPITAL

**AMPLIAÇÃO
HOSPITAL**



SERRA LIFE
CANELA • RS







BLOCO A

BLOCO B

SERRA	EX35	EUCE
EUCE	03	
SERRA	CN63	EUCE
EUCE	05	
SERRA	LB51	EUCE
EUCE	01	
SERRA	AD26	EUCE
EUCE	02	

UNDERGROUND



GROUND FLOOR



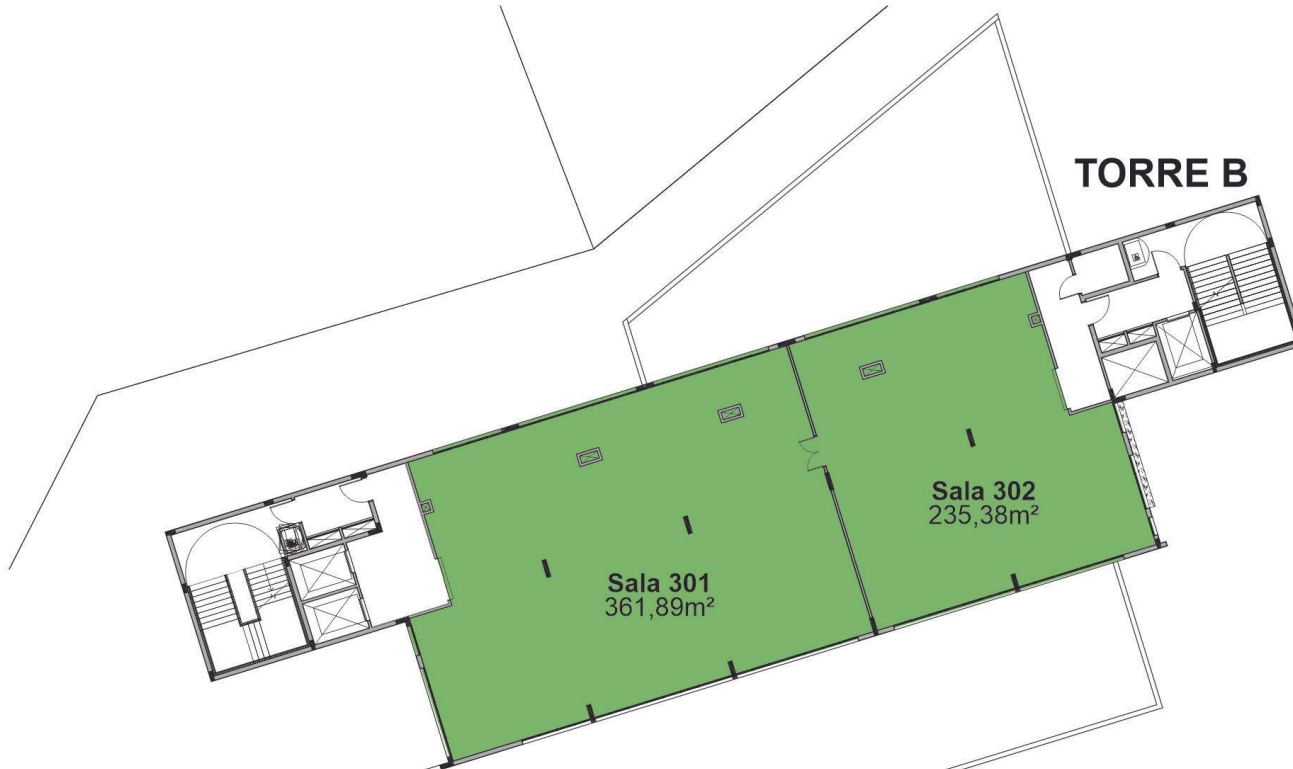
- Laboratório
- Administração
- Café
- Farmácia
- Refeitório
- Centro de Diagnóstico por Imagem
- Pronto Atendimento

2º FLOOR



3 ° FLOOR

TORRE B

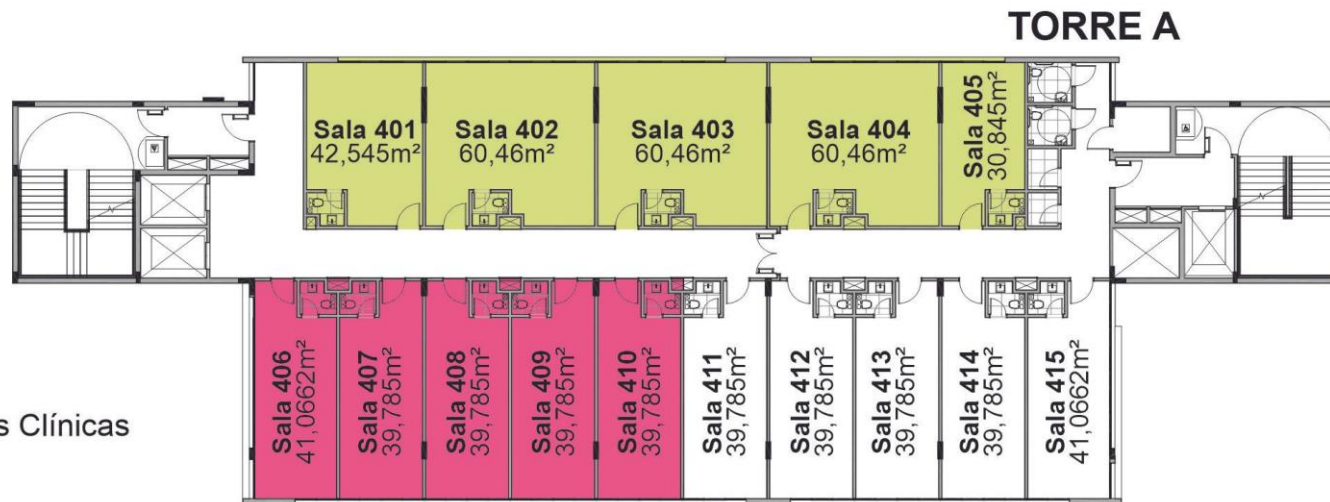


TORRE A

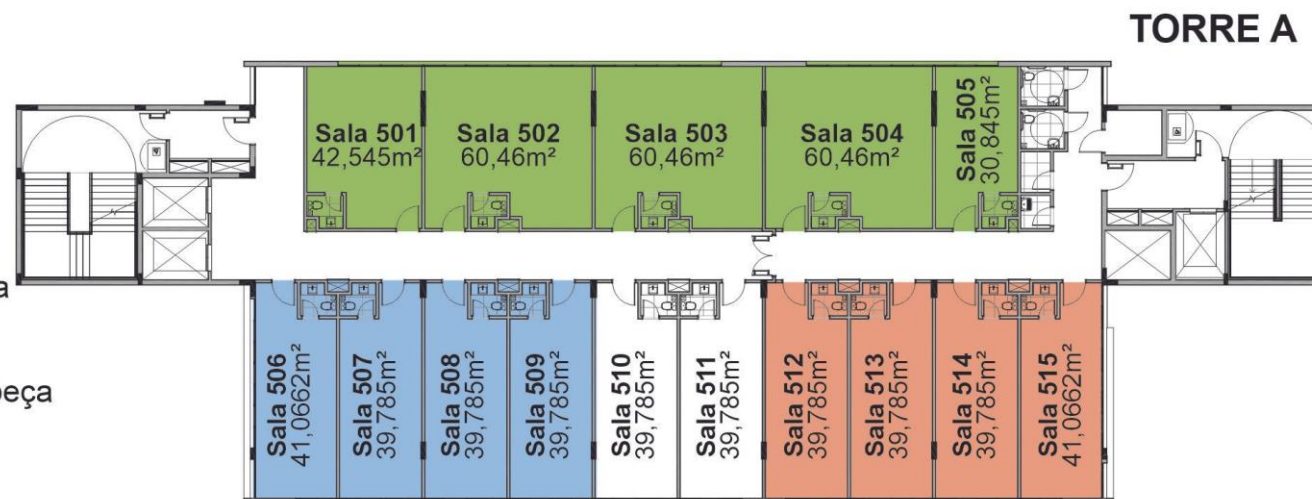
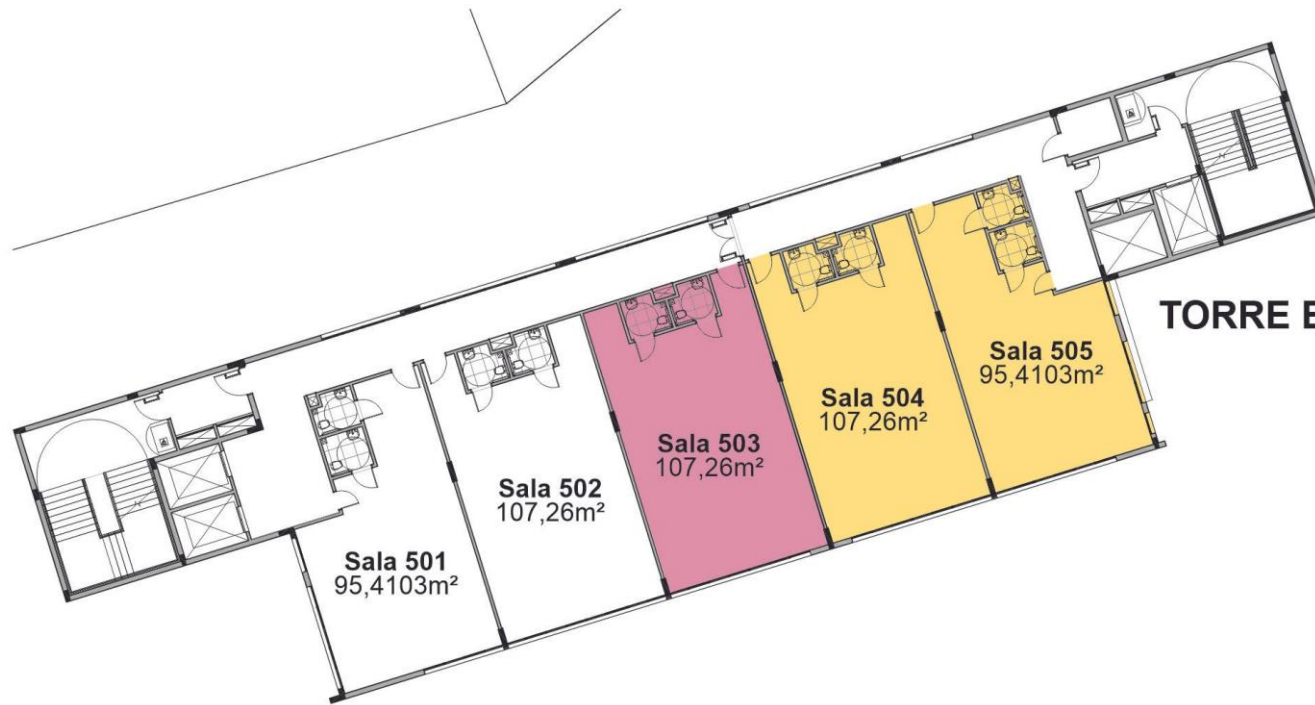


- Internação
- Medicina da Família
- Traumato Ortopedia
- Pediatria
- Ginecologia

4º FLOOR

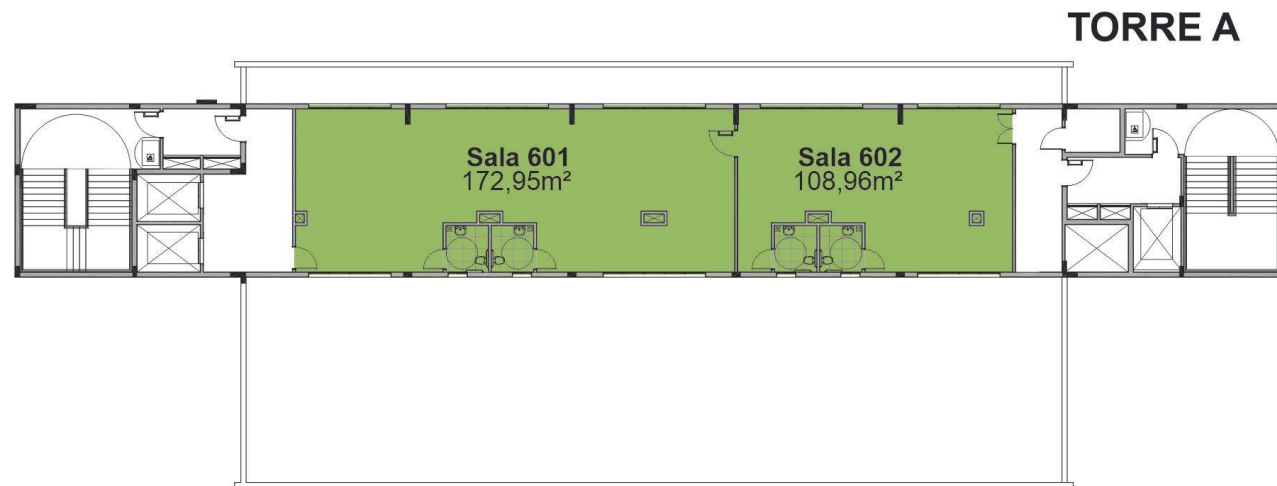
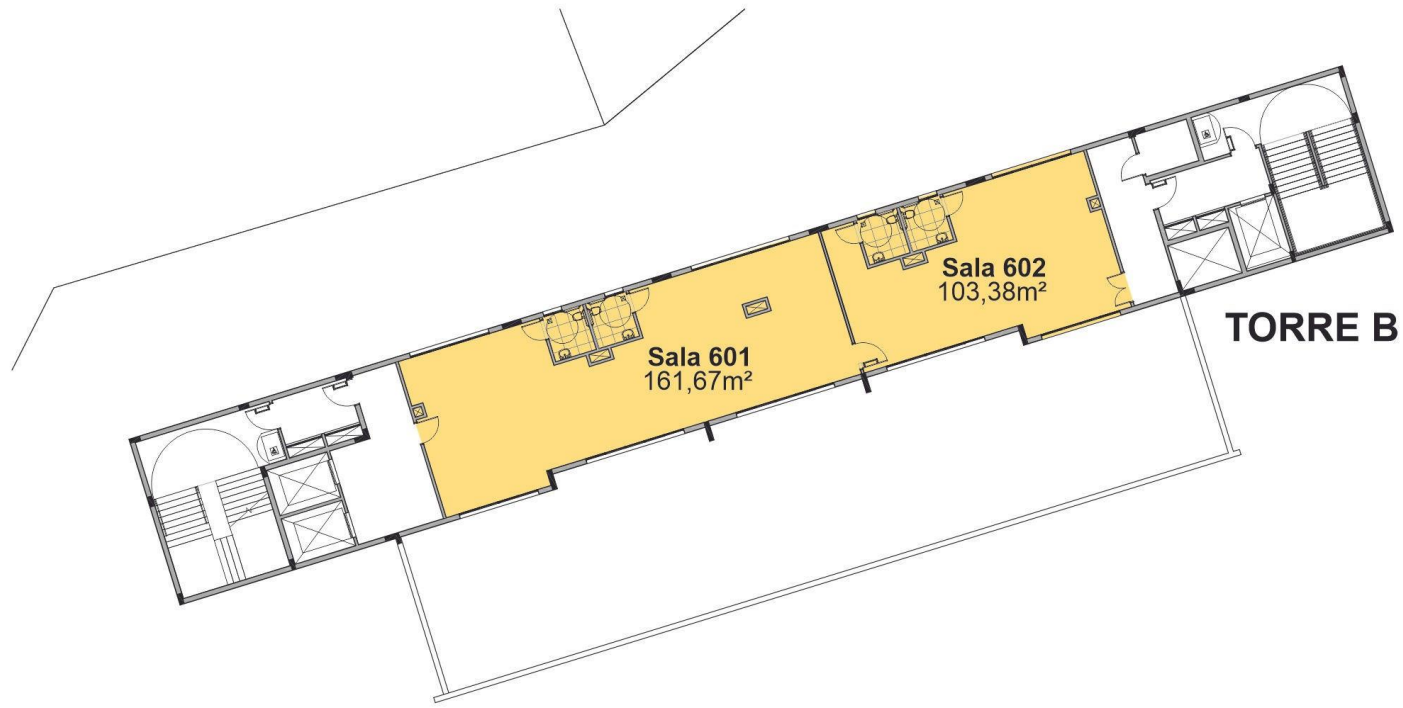


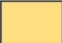

- Internação
- Odontologia
- Especialidades Clínicas



- Cirurgia Geral
- Medicina da Família
- Plástica
- Otorrino, Uro e Cabeça
- Oftalmologia

UNDER ROOF



-  Hemodiálise
-  Oncologia

An aerial photograph of a modern, multi-story building complex with a grey facade and large windows. The building is surrounded by lush greenery and trees. A logo consisting of a yellow and white geometric shape is positioned above the text. The text 'SERRA LIFE' is written in a white, serif font, and 'CANELA • RS' is written in a smaller, yellow, sans-serif font below it.

SERRA LIFE

CANELA • RS

A logo for 'NOV ALTERNATIVA Incorporadora'. It features a white, stylized arrow pointing upwards, surrounded by concentric white circles. The text 'NOV ALTERNATIVA' is written in a bold, white, sans-serif font, and 'Incorporadora' is written in a smaller, white, sans-serif font below it.

NOV ALTERNATIVA
Incorporadora